

LED Striplight 2016 North America

24W/m

Features

- Extremely energy saving with low power consumption
- High brightness, multi-functional for linear decoration
- Long average life 30000 hours
- Good color rendition
- Low thermal output with no IR and harmful UV
- No mercury and hazardous substances
- For all strips with wattage over 14.4W, an aluminium profile must be used
- Dimmable as option
- Color Rendering Index: ≥ 90
- LED Driver Controllers: 12V/24V LED Driver, LED Dimmer (With Remote Control Device), LED Manual Controller, LED Remote Controller
- Connectors: 4 Pin Quick Connector, Strip-to-Wire, Strip-to-Strip, 'I' Type Fast Plug, 'T' Type Fast Plug, Wire-to-Wire Fast Plug
- Profiles: Surface mounted, Recessed
- Extra profiles and accessories need to order separately



Diagrams

LED Driver Controllers:



**12V/24V
LED Driver**



**LED Dimmer
(With Remote
Control Device)**



**LED Manual
Controller**



**LED Remote
Controller**

Connectors:



**4 Pin
Quick Connector**



Strip-to-Wire



Strip-to-Strip



**'I' Type
Fast Plug**



**'T' Type
Fast Plug**

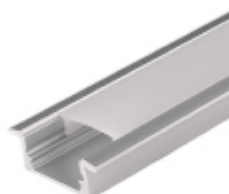
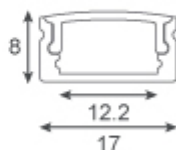


**Wire-to-Wire
Fast Plug**

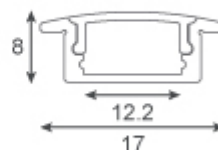
Profiles:



**Surface
mounted**

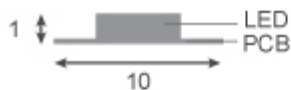


Recessed

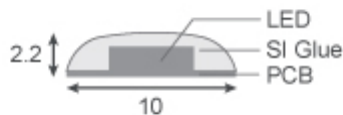


* Extra profiles and accessories need to order separately.

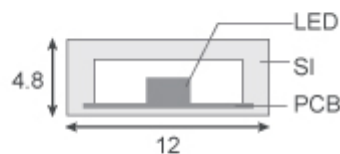
Dimensions:



IP20

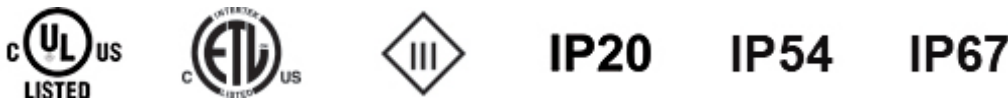


IP54-S



IP67-R

Standards



Applications



Technical Data	
Electrical	
Rated Wattage [W]	24W/m
Rated Voltage [V/Hz]	100-277Vac, 50/60Hz
Power Factor @120V	0.95
Input Current [mA] @120V	211
LED	SMD 2016
Model	
LED 2016 24W 10-240 9XX	24W/m, 12V/24VDC
Luminous Flux [lm]	
24W/m	2040lm/m @3000K
	2100lm/m @4000K
	2160lm/m @6500K
Cutting Unit [mm]	
24W/m	12.5mm/3LEDs (12V), 25mm/6LEDs (24V)
Performance	
SDCM	<6
Estimated Yearly Energy Cost [\$USD]	2.89/m
Luminous Efficacy [lm/W]	85-90
Color Rendering Index [Ra]	≥90
Color Maintenance [hr]	>6000
Luminous Intensity Distribution [°]	120
Life [Yrs] (based on 3hrs/day)	27
Lumen Maintenance at 6000hrs	>0.8
Rapid Cycle Stress	>15,000 cycles
Start Time [sec]	<0.5
LED Failure	<5%
Mechanical	
Length L [mm]	5000 per reel

Width W [mm] x Height H [mm]	IP20 : 10 x 1
	IP54-S : 10 x 2.2
	IP67-R : 12 x 4.8
	Surface mounted profile : 17 x 8
	Recessed profile : 17 x 8
Number of LEDs	240 pcs/m
Material	Chips: Epistar
Standard Compliance	
ANSI	UL8750, UL1993, UL1598, C82.77-2002, C78.377-2008
Mercury Content [mg]	0.0
Other	
Dimmable [Y/N]	Y
Operation Temperature	-20°C ~ 50°C
Storage Temperature	-10°C ~ 30°C