



## LED Striplight 2016

### Features

- Extremely energy saving with low power consumption
- High brightness, multi-functional for linear decoration
- Long average life 30000 hours
- Low thermal output with no IR and harmful UV
- No mercury and hazardous substances
- Dimmable as option
- High color rendition,  $R_a \geq 90$

### Materials / Finish

- Chips: SMD 2016

### Installation / Mounting

- Easy to install with 3M adhesive tape, mounting brackets and profile

### Standards

- EMC, RoHS
- Class III Electrical
- IP 20, IP 65, IP 67

### Connectors



4 Pin  
Quick Connector



Strip-to-Wire



Strip-to-Strip



'I' Type  
Fast Plug



'T' Type  
Fast Plug



Wire-to-Wire  
Fast Plug



### LED Driver Controllers



LED Driver



LED Dimmer  
(With Remote  
Control Device)

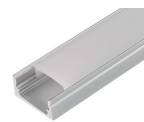


LED Manual  
Controller

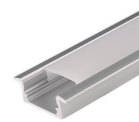
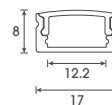


LED Remote  
Controller

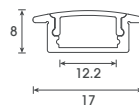
### Profiles



Surface  
Mounted

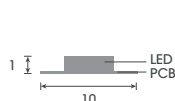


Recessed

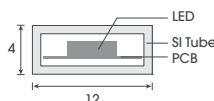


\* Extra profiles and accessories need to order separately.

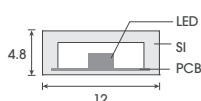
### IP Structures



IP20



IP65



IP67-R

Model	Voltage	Wattage	Color Temp	PCB Width	Cutting Unit	No. of LEDs	Lumen	ENERGY STAR
LED 2016 9.36W 5-140 930	24V DC	9.36W/m	3000K	5mm	50mm/7LEDs	140 pcs/m	895lm/m	F
LED 2016 9.36W 5-140 940	24V DC	9.36W/m	4000K	5mm	50mm/7LEDs	140 pcs/m	950lm/m	F
LED 2016 9.36W 5-140 965	24V DC	9.36W/m	6500K	5mm	50mm/7LEDs	140 pcs/m	980lm/m	F
LED 2016 14.3W 5-210 930	24V DC	14.3W/m	3000K	5mm	33.3mm/7LEDs	210 pcs/m	1290lm/m	G
LED 2016 14.3W 5-210 940	24V DC	14.3W/m	4000K	5mm	33.3mm/7LEDs	210 pcs/m	1425lm/m	F
LED 2016 14.3W 5-210 965	24V DC	14.3W/m	6500K	5mm	33.3mm/7LEDs	210 pcs/m	1450lm/m	F



Package Content : 5m per reel